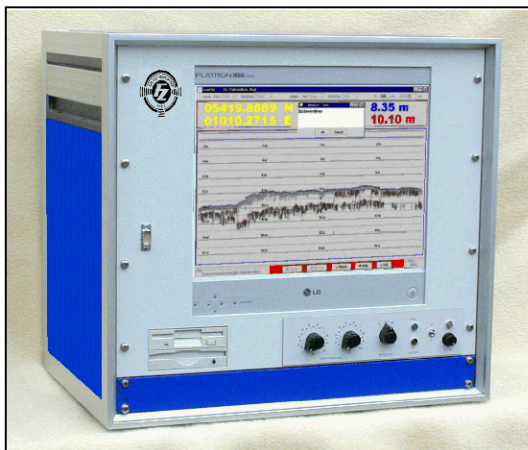
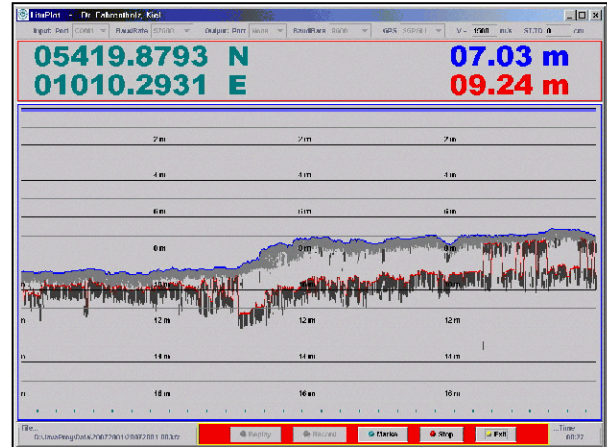




LituGraph XL

NEW: Hydrographic Survey Echo Sounder with incorporated PC and LCD/TFT-Display

- **Survey Echo Sounder, PC based**
- Graphical display of the echogram on a LCD/TFT - Monitor
- Simultaneously working multi frequency echo sounding possible
- Raw data storage of the complete echogram without any data lost
- Real time-display
- Zoom-functions
- Storage of the user adjustments
- Input of position fix and GPS-time
- Initialization and storage of marker lines by software
- Additional input and storage of annotations by external computers
- Storage of the time together with each sounding for post processing of the age of the GPS-data
- Adjustment of sound velocity, transducer depth and sound frequencies offsets
- Digitizing, display and output of depth data to other survey computer systems
- Transmission power selected automatically according to the water depth
- Replay of the echograms for post controlling of the data possible
- Echogram with b/w or color printer printable
- Several daughter LCD/TFT-Monitors possible
- Main voltage of the LituGraph incl. PCs and TFT-Monitors: 24 V= Board battery, no USV necessary
- HEAVE - Input possible



Version A: Compact EchoSounder with incorporated 15" - TFT Monitor



Version B: External TFT-Monitor, Different size possible

LituGraph XL



Technische Spezifikationen / Technical Specifications:

- Lotfrequenzen / Sound frequencies: 12, 15, 30, 100, 200, 350, 700 kHz
mehrere Frequenzen gleichzeitig lotend möglich /
simultaneously multi frequency sounding possible
- Meßbereiche / Ranges: 0 - 16 m
0 - 32 m
0 - 64 m
0 - 128 m
Sonderbereiche bis ~ 1280 m möglich /
special ranges up to ~ 1280 m possible
- Tiefenaufösung / Resolution: ~ 1 cm abhängig vom Meßbereich
~ 1 cm depending on depth range
- Dateneingang / Data input: Übergabe von Positionsangaben durch externe
Ortungssysteme und Beschriftungen durch
externe Computer /
Input of fix data by external positioning systems
and annotations by external computers
- Datenausgang / Data output: V 24 RS 232 c
- Bordspannung / Main voltage: 24 Vdc
- Anzeige / Display: Integrierter / incorporated TFT-Monitor
- Daten-Verwaltung / Data-Management: Integrierter / incorporated Computer
- Maße / Dimensions: Kompaktgerät / Incorporated equipment:
19"/9 HE Gehäuse / housing:
H: 428 mm, B: 515 mm, T: 365 mm
inclusive TFT-Monitor
or 19"/4 HE Gehäuse / housing:
H: 180 mm, B: 450 mm, T: 325 mm
+ external TFT-Monitor
- Option: Eingang für HEAVE Kompensation der analogen Echos und der Digitalwerte /
Input for HEAVE-Compensation of analogue echos and digital data

Technische Änderungen möglich ! Technical modifications possible !

Dr. Fahrentholz GmbH & Co. KG
Echolote und Elektronik, Echo Sounders - Electronics
Grasweg 4 - 6, 24118 Kiel, Germany

Tel.: ++49 431 542049, Fax: ++49 431 542051